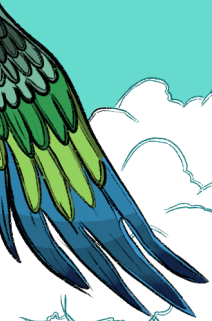


JAKE BAXENDALE & JASMINE LOVELL-SMITH
SANCTUARY





RACHELLE EASTWOOD flute
BEN HUNT trumpet
JASMINE LOVELL-SMITH soprano saxophone
JAKE BAXENDALE alto saxophone/bass clarinet
LOUISA WILLIAMSON tenor saxophone
KAITO WALLEY trombone
BLAIR LATHAM baritone saxophone/bass clarinet
ALEISTER JAMES CAMPBELL guitar
ANITA SCHWABE piano
CHRIS BEERNINK bass
HIKURANGI SCHAEVERIEN-KAA drums



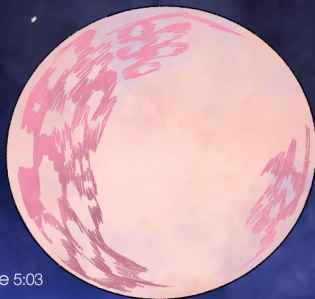
Recorded on July 25th and 26th 2020 at Massey Studios by THOMAS VOYCE
Assisted by MICHAEL SUTHERLAND
Mixed by THOMAS VOYCE at Rhombus Studios
Mastered by ARNOLD KASAR at Calyx Studio, Berlin
Produced by JASMINE LOVELL-SMITH, JAKE BAXENDALE and THOMAS VOYCE
Album art by EDEN FAINBERG
Album design by JAMIE BREIWICK
This album was produced with the support of CREATIVE NEW ZEALAND TOI AOTEAROA

The music on this album was developed as part of the Arthur Street Loft Orchestra, a weekly series in Wellington featuring original music for large ensembles. Many musicians have dedicated their time and talents to composing for and performing in this series, and a lot of great music has come out of it. We would like to thank our community for the collective creative effort!

Thanks also to everyone who contributed to the making of the album, and to our friends, families and mentors. Special thanks to John Psathas. And many thanks to our supportive partners Zoë Heine and Cristopher Ramos Flores.

LEAVES OF GRASS - Baxendale

- 1 I: OPENING 4:16
- 2 II: A CHANT OF PAINS AND JOYS 10:55
- 3 DRUM TAPS 1:58
- 4 III: I SING THE BODY ELECTRIC 5:20
- 5 NOCHE OSCURA - Lovell-Smith 6:51
- 6 SANCTUARY - Lovell-Smith 18:51
 - I: OPTIMISM (0:00-5:00)
 - INTERLUDE (5:00-7:51)
 - II: STRANGELY FAMILIAR (7:51-13:43)
 - III: INEVITABLE (13:43-18:51)
- 7 SLEEP (A GLIMPSE OF PLIMPSE) - Baxendale 5:03



Compositions ©Jake Baxendale (APRA) / ©Jasmine Lovell-Smith (APRA)

 creative *nz*
ARTS COUNCIL OF NEW ZEALAND TOI AOTEAROA

